



# **03 Community Facilities**

## INTRODUCTION

Community facilities and services play a vital role in meeting the City’s health, safety, and welfare issues of both its current and future populations. The Community Facilities & Services chapter guides facility and service establishment and programming to serve the City’s current and future population as efficiently as possible. This chapter addresses key issues related to providing adequate public facilities and services over the life of Plan Aberdeen. Community facilities include all properties and buildings owned by, or providing a service to, the City of Aberdeen. These facilities are grouped into five categories:



The following sections detail the status and projected needs of these community resources. The elements of the state of Maryland’s 12 Planning Visions touched on in this chapter are highlighted below and throughout the text, but include infrastructure, transportation, housing, stewardship, and implementation.

## GOALS

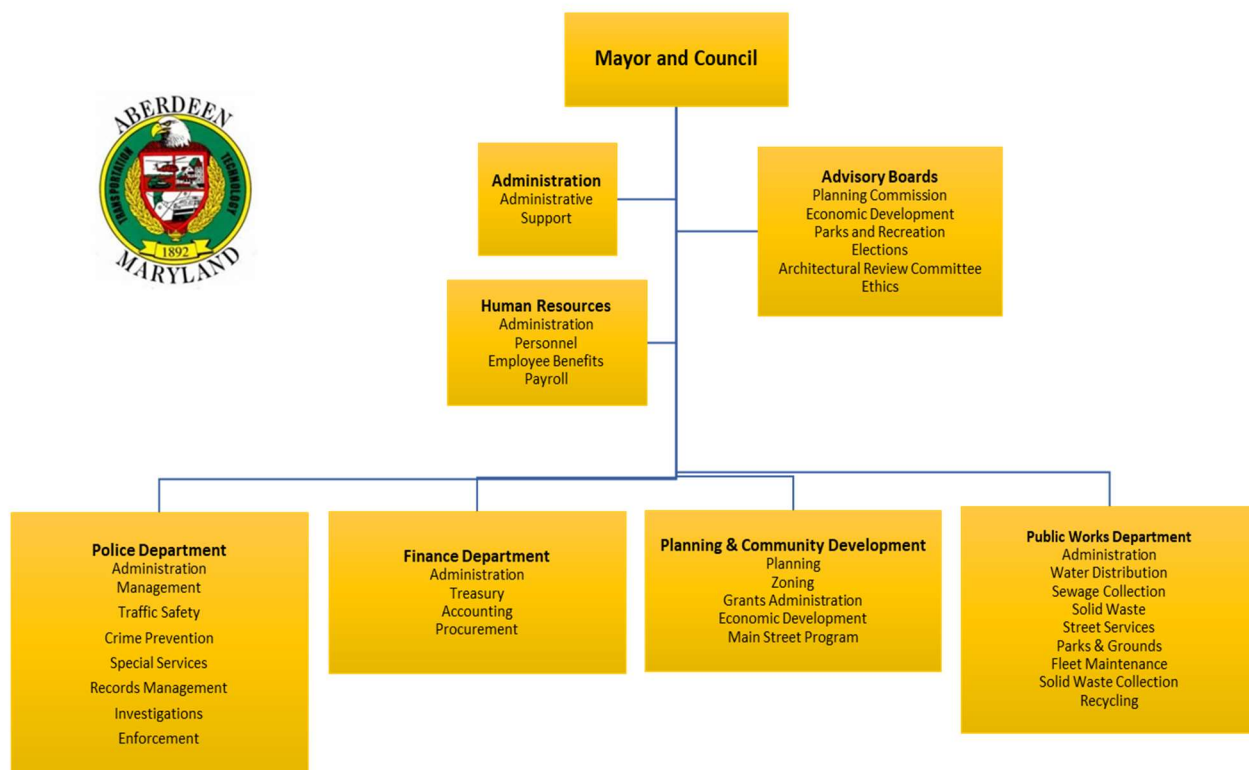
Maintaining, improving, and providing additional community resources is a key initiative for Aberdeen. In order to continue to provide these services, the following have been identified:

- 1. Establish plans and programs for City parks, recreation, and open space management.**
  - Develop a parks and recreation program to support the Aberdeen community, which may include budget allocations, prioritization, and establishing a Department of Parks and Recreation.
  - Amend the Development Code to require recreational amenities in residential developments over 100 residential lots (i.e., multi-purpose fields, walking trails, playgrounds, etc.).
  - Support the design, planning, and construction of the proposed Aberdeen Activity Center with Harford County Parks and Recreation.
  - Partner with University of Maryland Upper Chesapeake to create a walking trail to connect with existing commercial areas and University of Maryland Upper Chesapeake Aberdeen Medical Campus from the new Activity Center site.
  - Construct pocket parks where appropriate in residential developments throughout the City.
  - Utilize the existing facility study for the Aberdeen Swim Center and prioritize the necessary improvements to bring the facility into ADA, electrical, plumbing, and building code compliance.

- 2. Maintain the existing and planned public facilities to accommodate growth and sustainability.**
  - Conduct a facility study to determine current and future needs for City departments.
  - Conduct an energy audit and update all public facilities to include lighting, cooling, and heating.
- 3. Ensure that the Aberdeen’s approved development plans are shared with Harford County Board of Education and other agencies.**
  - Compile building permit data annually and forward to Harford County agencies for review (i.e., Board of Education, Planning and Zoning, etc.) to plan for adequate public facilities.
- 4. Continue to coordinate with Aberdeen Providing Ground (APG).**
  - Continue ongoing coordination efforts to ensure that future needs for APG and related community facilities, housing and transportation improvements are addressed.
- 5. Continue to offer a semi-annual community bulk item drop off event.**
  - Assist residents by providing a venue to collect and remove unwanted household items.
  - Improve the appearance of our community.
- 6. Continue to refine the Adequate Public Facilities Ordinance requirements and process for review.**
  - Establish a process and timeline for reviewing Adequate Public Facilities reports.
  - Coordinate with Harford County Government to ensure that effective planning and implementation occurs for public facilities and utilities located adjacent to the City limits.
  - Develop a long-term capital improvement plan (10 years) consistent with the adopted Plan Aberdeen.
  - Promote innovative and sustainable strategies for the orderly extension of public facilities to include transportation facilities and other related services.

**GOVERNMENT STRUCTURE**

The City of Aberdeen is presided over by the Mayor and a City Council, with several boards, committees, and governmental agencies assisting the executive and council in the implementation of their duties. The organization of City bureaucracy has been revised since it was founded; the most recent revision to the City Charter (No. 22-CR-01, as amended) removed the position of City Manager, whose duties were reallocated to other staff, made the Mayor the Chief Executive and Operating Officer of the City, and created a Council President role among other changes. **Figure 3-1, City Organizational Chart** is presented below to provide a visual representation of the City’s governmental structure and organization.



**Figure 3-1. City Organizational Chart**

In addition to the Mayor and City Council, several advisory committees have been established since the City was founded. The following volunteer boards support and improve the City by providing their subject-matter expertise to the Mayor, City Council, and other decision makers.

*Aberdeen Parks & Recreation*

The City’s Parks and Recreation Board is responsible for assessing, enhancing, and promoting parks and recreation throughout Aberdeen, as well as programming recreational activities. Aberdeen Parks and Recreation Board works closely with Harford County’s Department of Parks and Recreation for programming recreational activities. A full list of programming is available on the Board’s website.

### Architectural Review Committee

The Architectural Review Committee (ARC) duties include reviewing applications for (re)development, renovations, or additions to existing buildings within the designated overlay districts and determining whether an application and its proposed construction are in accordance with the overlay district regulations and design requirements. (Refer to the Development Code, §235-40 for further information. The City does not have a designated historic overlay district).

### Board of Appeals

The City's Board of Appeals acts as a quasi-judicial board reviewing variance and special exception requests and provides interpretations of the Development Code as required.

### Board of Elections

The Board of Elections consists of three members, appointed by the Mayor and approved by Council for four-year terms. Members must be qualified voters of the City, both at the time they are appointed and throughout their term in office.

### Economic Development Commission

The duties of the Economic Development Commission (EDC) include promoting economic development for the City, supporting and encouraging growth and retention of existing businesses and industries, recommending financial incentives or financing methods that will foster economic development, and supporting and encouraging conventions and tourism beneficial to the City and surrounding area.

### Ethics Commission

The five members of the Ethics Commission are appointed by the Mayor and approved by Council to three-year terms. The Commission reports to the Maryland State Ethics Commission on or before October 1, annually, to certify that the City is in compliance with the requirements of *State Government Article, Title 15, Subtitle 8, Annotated Code of Maryland*, for elected City officials.

### Planning Commission

The Planning Commission is comprised of seven appointed members who each serve five-year terms. The Commission is responsible for overseeing updates to the Comprehensive Plan, as well as reviews of site plans, subdivision plats, zoning district changes, text amendments to the development code, and land acquisition and development for City open space.

### PUBLIC FACILITIES AND SERVICES

Public Facilities are important to both the City and its residents. The state and availability of these facilities dictates that growth should be directed to suitable areas where facilities are able to support the surrounding population and, restricting it in areas where certain public facilities are inadequate. Development approvals are based on public facility capacity standards to curtail development in areas where they are not sufficient to serve the needs of the community, and to delay development in Growth Areas until appropriate service levels are in place or reasonably assured.

#### Governance & Administration

Aberdeen’s City Hall is located at 60 North Parke Street in the heart of downtown. City Hall houses the City’s administrative offices for Finance, Public Works, Human Resources, and Planning and Community Development. City Hall has been home to these departments for over 20 years. In addition to providing office space, the building also houses the City’s Council Chambers and Aberdeen Police Department.



The City’s FY 2022-2026 Capital Improvement Plan indicates a few issues with the aging City Hall:

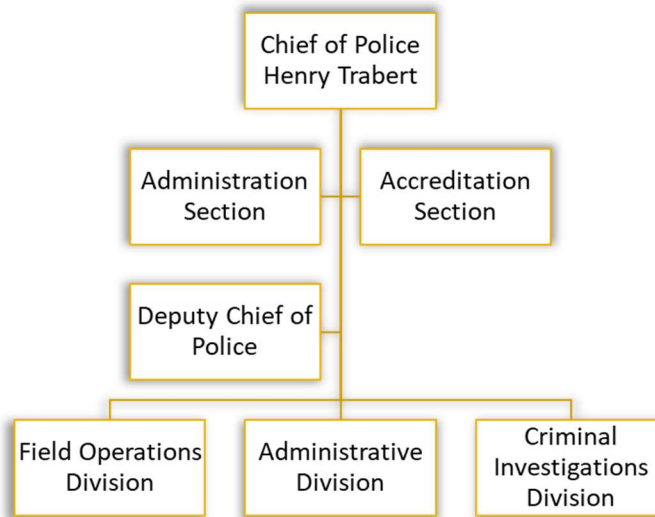
- HVAC Modernization – City Hall’s heating, ventilation, and air conditioning system is 20 years old and in need of energy enhancements to provide efficient and effective cooling and heating. Energy enhancements have a higher priority than unit replacements.
- Administrative Workspace – As the City grows, departments are quickly running out of administrative space for staff members, including City administrative support and the Police Department. As part of any analysis, the City should consider whether moving some employees to an alternate facility/location would be feasible or practical. This may include repurposing existing facilities such as the existing Activity Center on Franklin Street.
- Elevator Modernization – City Hall’s elevator requires upgrading and will be out of service in spring 2023 to make the upgrades.

A facilities study is recommended within the next five years to determine the current and future needs for the City’s Department of Public Works and Aberdeen Police Department.

#### Police Services

The City of Aberdeen Police Department (APD) currently employs 42 sworn law enforcement officers, 5 full-time police communications officers (dispatchers), 5 administrative personnel, and 7 crossing guards. APD is a full-service police agency, funded through County and State budgets as well as City tax dollars, consisting of a Patrol Division staffed by 24 patrol officers overseen by a lieutenant (**see Figure 3-2, APD Organizational Chart**). The Criminal Investigation Division (CID) has three full-time investigators and a crime scene technician; three additional detectives (including a K-9) are assigned to the Special Operations Unit and are responsible for street-level narcotics and vice investigations. A fourth detective is assigned full-time to the Harford County Task Force, a countywide multi-jurisdictional unit investigating mid- and upper-level drug trafficking organizations. CID is supervised by a lieutenant. The Administrative lieutenant

supervises the Administrative Sergeant and is responsible for procurement, quartermaster inventory, fleet maintenance, records management, police communications, and numerous other related activities. The administrative sergeant oversees two School Resource Officers, crossing guards, and a civilian clerical supervisor. APD also deploys a Special Weapons and Tactics Team, an Honor Guard, and a Vehicle Accident Reconstruction Team. Under the Office of the Chief is a Deputy Chief, who is responsible for APD’s day-to-day operations and a civilian Commission on Accreditation for Law Enforcement Agencies (CALEA) manager. In 2016, the APD became responsible for investigating complaints from citizens on municipal code violations pertaining to environmental control.



**Figure 3-2. APD Organizational Chart**

*Source: Aberdeen Police Department Policies & Procedures Manual (July 16, 2021)*

The Uniform Crime Reporting Model (UCRM) applies a standard of 2.4 officers for every 1,000 residents to evaluate the adequacy of service for a community. Using this standard, Aberdeen has adequate officers to serve City residents as their current ratio of officers to residents is approximately 1 officer for every 387 residents.

During Plan Aberdeen stakeholder interviews, APD noted that they have outgrown their space within the Municipal Center and that renovations are needed to keep up with changes to the profession. The City is well known as one of the safest cities in the region based on crime statistics, but the survey did reveal that there is a perception of crime being a problem within the community (e.g., theft, domestic assaults). The National Council for Home Safety and Security has recognized Aberdeen among the top 10 safest places in Maryland for the past three years. Further reinforcing this position is APD’s identification of code enforcement as the predominant type of complaint made to the Department, with the most frequent complaints related to overgrown vegetation, litter, and vehicles.



### CALEA Certification

Since 2015, APD has been accredited with the Commission on Accreditation for Law Enforcement Agencies (CALEA). Complying with CALEA Standards requires an agency to produce written policies and practices demonstrating the policies are being followed and to maintain annual compliance. In 2019, APD was recertified by CALEA. APD is the only CALEA certified agency in Harford County. This high standard of policing ensures residents receive the same high quality of service regardless of the officer sent.

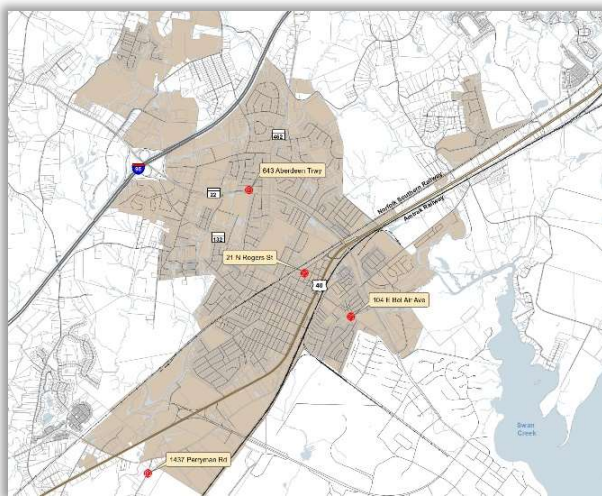
### Fire Services

The Aberdeen Volunteer Fire Department, Inc. (AVFD), established in 1889, is a robust, 79-person emergency response team that employs a mix of volunteer and career professionals with a passion for protecting and serving the Aberdeen community. AVFD provides fire suppression and prevention, rescue services, and emergency medical services. Fire and rescue services in Aberdeen are provided by both volunteer firefighters and paid emergency medical technicians (EMTs).

AVFD has a 4/9 Insurance Services Office (ISO) rating, based on how well-equipped the department is to put out fires. The top score (4) is out of 10, with a lower score being the best. AVFD has a dual ISO rating, which is the bottom number (9). This takes into consideration fire station distances from certain areas as well as water supply capabilities in rural areas.



**Figure 3-3, Fire Station Locations** shows the locations of AVFD’s four fire stations. The main fire station, located on Rogers Street, is centrally located and has ready access to major streets in all directions. In October 2019, AVFD broke ground on their \$9 million renovations to the nearly 50-year-old facility. These renovations, completed in September 2021, greatly enhance efficiency in providing emergency services.



**Figure 3-3. Fire Station Locations**

The City also has two substations, one located on MD 22 and the other on East Bel Air Avenue. There is also one substation located in Perryman that is owned and operated by AVFD but is not located within the corporate limits of Aberdeen. AVFD utilizes seven trucks, three Emergency Medical Service (EMS) units, and four additional utility vehicles to aid in fire rescue and recovery.



During Plan Aberdeen stakeholder interviews, AVFD noted that they have had difficulty attracting new members to the all-volunteer company in the past few years and predicted there will be a need to move to at least a partial paid firefighting force in the next 10-20 years.

### Department of Public Works

Aberdeen’s Department of Public Works (DPW) is responsible for the maintenance of approximately 61 miles of City-owned roads, sidewalks, and stormwater management infrastructure like curbs and gutters. DPW is also charged with the maintenance and enhancement of public water supply, sanitary sewer services, public-area snow removal, as well as the maintenance of City owned buildings, properties, and parks. DPW is also responsible for the administration and implementation of all capital construction projects, stormwater management, and construction permits.

The Public Works Maintenance Facility is located off Michaels Lane next to the Aberdeen Wastewater Treatment Plant (WWTP), providing office space for staff as well as a covered storage area for maintenance vehicles, equipment, and refuse trucks. With the continued growth of the City, this facility needs to be expanded to accommodate staff and equipment. The City’s FY 2022-2026 Capital Improvement Plan reiterates this need by providing capital programming to expand the facility’s footprint. This involves expanding existing fencing, adding a covered storage area, and adding a concrete pad to the grounds as well as expanding or retrofitting existing facility space for equipment, showers, locker rooms, and offices. It also identifies the need to upgrade the emergency power generator, which currently is only able to power part of the facility.

**Chapter 10—Water Resources** covers the City’s drinking water, wastewater, and stormwater in much more detail. **Chapter 7—Transportation** and **Chapter 9—Environmental Resources and Sensitive Areas** discuss topics and services for which DPW also has a significant role (e.g., the City’s transportation network, review and protection of natural resources).

### Aberdeen Branch Library

The Aberdeen Branch of the Harford County Public Library System is located at 21 Franklin Street, across from the Aberdeen City Hall and Festival Park. The branch has a full rental library of books, DVDs, and music, as well as an early literacy play area, free public WiFi, public access computers, and printing capabilities. In addition to traditional resources, the library also offers collections such as American Girl dolls and superhero action figures. The library has teamed with local non-profits to provide services like “Lawyer in the Library”, which allows members to meet with a Lawyer to provide legal services. In addition to providing services within the walls, the library also provides a delivery type of service for both the general and aging populations. The “Rolling Reader” and “Silver Reader” both provide a book delivery/exchange program to those who may not be able to physically get to the library, extending services outside of the traditional building.



Harford County Public Library prepared a Facilities Master Plan in September 2018. The Facilities Master Plan included recommendations for the Aberdeen Branch prioritizing those by conditions; by functionality and utilization of space; and by order of magnitude at an estimated budget of \$4.75 million, with funding provided by Harford County Public Library System. Recommendations for the Aberdeen Branch for expansion, updates and reconfiguration include:

- Consider a 7,500 SF addition, potentially north of the building, to include a Makerspace, dedicated Quiet Areas, and a re-configured Entry.
- Consider expanding the entry vestibule at the existing covered entry to provide increased services, a more inviting entry experience, free standing material return unit, and merchandising opportunity for new/popular/themed materials
- Consider adding a mobile service point that is moved closer to the Teen Area during peak usage times
- Reallocate adjacent spaces for staff work areas and storage to increase size
- Reallocate space to create improved meeting room storage
- Expand meeting room
- Consider additional acoustical screening between the Children’s Area and Staff Area to resolve noise issues
- Consider reducing shelving heights in the adult area and updating the look and functionality of end panels
- Update all finishes, furniture, shelving, technology, and lighting throughout the building
- Investigate options for adding adequate parking

### ***Little Free Libraries***

While not an actual facility and not associated with the public library system, the Little Free Library is a small, outdoor cabinet that allows readers to donate or borrow a book without needing a library membership. These facilities are increasingly popular with residents and can now be found along West Bel Air Avenue, Victory Street Park, and the ReStore by Habitat for Humanity, in addition to the original location at Swan Meadows. Little Free Libraries are often sponsored by local groups or individuals but are organized under the umbrella of the nationwide Little Free Library organization. Local sponsors include Harford Habitat for Humanity.

### **Aberdeen Activity Center**

The Aberdeen Activity Center is currently located at 7 Franklin Street. The building is 7,800 square feet in area and offers a variety of recreational services for all ages and a wide array of programs tailored to various community interests.

The City purchased 684 W. Bel Air Avenue for the future site of the Aberdeen Activity Center. It is centrally located along West Bel Air Avenue across from Middleton Road. The Aberdeen City Council and Staff, with the help of a mobilized

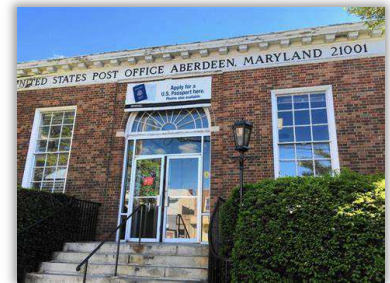


citizenry, urged elected County officials and staff to include design and construction funding as part of Harford County’s FY 2022 capital improvements program in the amount of \$9.0 million for the new Activity Center. The estimated construction budget for the 33,472 SF Activity Center is \$16.0M and estimated time to complete the construction is 14 months. The new Activity Center’s design is based on the models in Bel Air, Havre de Grace, and Fallston and will be utilized by Harford County’s Department of Parks and Recreation for a variety of community activities for all ages. Design began in FY 2022 with construction anticipated in FY 2023 and completion in FY 2024.

Nearly 600 residents and community leaders participated in an online survey that closed in September 2021, providing feedback to assist Harford County in the Activity Center’s design and construction. The highest-rated indoor amenities sought included an indoor pool, fitness center, party/event room, and multi-purpose room; the highest-rated outdoor amenities sought included a walking track/trail, playground, outdoor pool, basketball court, and batting cages. In March 2022, the City and the Harford County Department of Parks and Recreation held a listening session to hear what amenities citizens wanted to see at the new Activity Center. The facility will be owned and operated by Harford County.

### Aberdeen Post Office

The Aberdeen Post Office is located at 30 West Bel Air Avenue. Feedback from various outreach events during the plan update process has suggested that the aging building be updated, or in some suggestions, moved. Ease of entry and parking have been cited as issues in accessing the building.



### Boys & Girls Club

The Aberdeen Boys & Girls Club located at 100 E. Bel Air Avenue is a branch location of the Boys & Girls Club of Harford & Cecil County program. The Aberdeen location historically serves children between the ages of 6-18 years of age. A large focus of their services remains in before and after care programs, providing tutoring assistance as well as lessons in character and leadership development. The center also facilitates camps during the summer months, providing health and life skills, arts, sports, fitness and recreation. In addition to daily activities, the club has annual events such as the Youth Celebration Dinner. The dinner serves as the largest fundraiser for the facility each year and highlights one youth that has served the community with distinction. The Boys & Girls Club manages the Aberdeen Family Swim Center and sponsors activities throughout the summer season.

### Aberdeen Family Swim Center

In November 1985, the City purchased the Aberdeen Family Swim Center facility utilizing Maryland Department of Natural Resources’ (DNR) Program Open Space (POS) funds. Located at 615 Old Robinhood Road—just east of Paradise Road and one mile north of MD 22—the property is approximately 11.2 acres in size. The property provides recreation and leisure opportunities to area residents and features an Olympic-sized, 50-meter outdoor swimming pool, pavilion, picnic area, and restrooms. The Center hosts a summer youth camp each year.

The Aberdeen Department of Public Works (DPW) and leadership from the Aberdeen Aquatics Organization and Boys & Girls Club have worked together to maintain the facility and grounds. Capital Improvement Program requests to the City for support of the Swim Center were \$271k in FY 22 and \$196k in FY 23.

In Summer 2021, the City identified defects in the pool's plaster lining that required repairs not identified for the FY22 budget. An engineering study has been completed and capital improvements have been identified with projected costs to upgrade the facility and property.



### Ripken Stadium

Leidos Field at Ripken Stadium is home to the Aberdeen IronBirds, an affiliate of the Baltimore Orioles. The IronBirds are in the High-A East Minor League Baseball organization and offer a full-season venue. The 6,300-seat state-of-the-art minor league baseball facility held its first game in June 2002 and is located just off I-95 at MD 22 on Long Drive. In addition to its seasonal IronBirds baseball games, Leidos Field hosts a wide assortment of events each year, from charity races and walks, autocross, and seasonal festivals, weddings, and corporate meetings.



### *Ripken Youth Baseball Academy*

A separate but related entity, Ripken Baseball developed The Ripken Experience™ Aberdeen. Established in 2002, the facility hosts retail and corporate offices, 15 batting cages, 16 bullpens, one warm-up area, and nine fields developed as replicas of some of the most notable Major League Baseball (MLB) ballparks of the modern era, including Oriole Park at Camden Yards; Philadelphia Phillies' Citizen's Bank Park; Boston Red Sox Fenway Park; Washington Nationals' Nationals Park; Pittsburgh Pirates' PNC Park; Chicago Cubs' Wrigley Field; and several others. The Ripken Youth Baseball Academy holds numerous events at these facilities including tournaments, week-long experiences, summer collegiate leagues, spring training, camps, and clinics.

## SCHOOLS

The Harford County Public School System (HCPS) maintains a uniform system of education for its youth, providing educational experiences and opportunities designed to meet unique student needs. Curriculum in various skill areas, in the academic disciplines, and in the arts is developed, implemented, evaluated, and revised on a systemwide basis so that each student receives a well-balanced, carefully articulated, and appropriately diversified education. The HCPS curriculum is comprised of the following academic programs: art, business education, career and technology, early childhood education, English/language arts, family and consumer sciences, health, library/media, mathematics, music, physical education, science, social sciences, technology education, and world languages. **Map 3-1, School Locations** shows the location of the school facilities.

### ***Aberdeen High School***

Aberdeen High School, located at 251 Paradise Road, was opened in 2004. Since then, improvements have included classroom additions in 2008, and the school now has an area of 229,000 square feet on 20.4 acres of land, 18 acres of which is considered outdoor activity area. The High School recreational facilities include a gym, eight tennis courts, two indoor basketball courts, one 60'-75' diamond, two 90' diamonds, four full-size athletic fields (220'x360'), a storage building, field lighting, and a restroom building.

Beyond the core curricula, HCPS high schools offer a wide range of extracurricular and club related activities, which can include experiences in music, drama, fine arts, publications, and areas of student interest. Aberdeen High School also supports a complete program of interscholastic athletics.



The Science and Mathematics Academy (SMA) is based in Aberdeen High School and provides 55 students per grade-level with the opportunity to engage in science, technology, engineering, arts, and mathematics (STEAM) through non-traditional educational programs. Students must apply for this program as well as provide written teacher recommendations for consideration in attendance. Four-year course driven program yields proven results, as test scores from those participating in SMA are on average, an entire point above the global mean. This popular program continues to attract students from across the county.

### ***Aberdeen Middle School***

Aberdeen Middle School, located at 111 Mount Royal Avenue, opened in 1974, has an area of 196,800 square feet on 43.8 acres, 17 acres of which are considered outdoor activity area. Facility features include a gym, two indoor basketball courts, one 60' diamond, two 60'-75' diamonds, and three full-size athletic fields (220'x360'). The HCPS 2021 Educational Facilities Master Plan's Facility Needs Summary identified the need for a major HVAC system renovation; the Harford County Capital Improvement Program (CIP) funding request year has tentatively been identified for FY 2028.

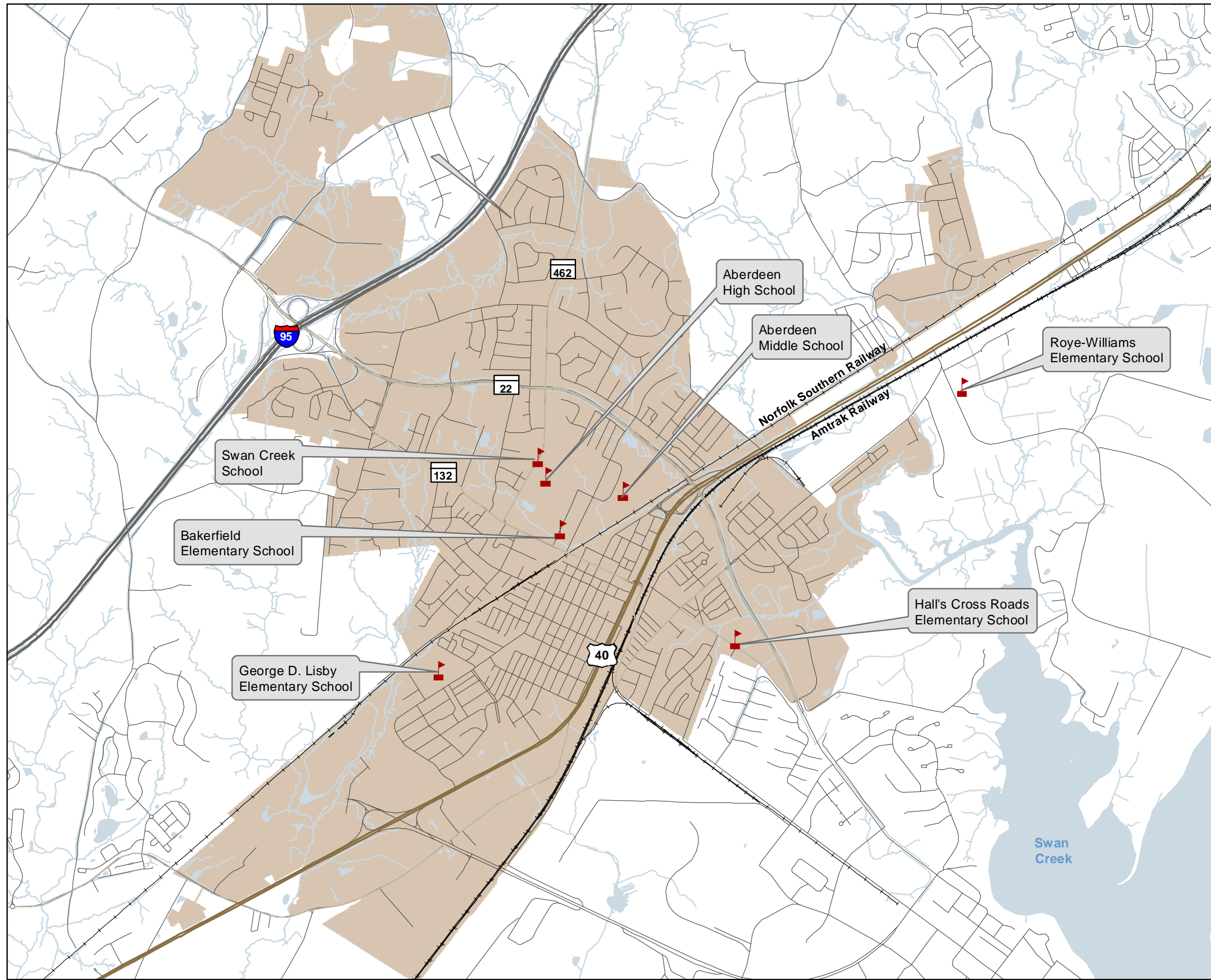


Aberdeen Middle School offers comprehensive programs of study designed to meet state grade level and graduation requirements. Additional evening and summer courses are available through the Alternative Education Program. Schools offer a wide and varied range of extracurricular and club related activities, which can include experiences in music, drama, fine arts, publications, and other areas of student interest.

# MAP 3-1

## School Locations

- City of Aberdeen
- Water Bodies
- Railroad
- Schools
- Major Roads**
  - Interstates
  - US Highways
  - State Routes
  - Local Routes



Source: City of Aberdeen  
Wallace Montgomery created this map for planning purposes from a variety of sources. It is neither a survey nor a legal document. Information provided by other agencies should be verified with them where appropriate.

April 2023  
0 0.1250.25 0.5 Miles

## Chapter 3 – Community Facilities

### ***Swan Creek School***

Swan Creek School, located at 253 Paradise Road, provides students with flexible learning options through two Blended Virtual Programs for students to choose from. The eLearning Blended Virtual Program is available to students in Grades K-12, while the In-Person Blended Virtual Program is available to students in Grades 6-12. The facility opened in 1965, has an area of 107,087 square feet on 23.5 acres, 18 acres of which are considered outdoor activity area.



### ***Elementary Schools***

HCPS offers a wide variety of programs at the elementary level including gifted education, summer school, and instrumental music. Prekindergarten programs in the elementary schools are designed to meet the needs of at-risk students. There are also before and after school on-site daycare centers available for the community. All kindergarten programs are full day.

### ***Bakerfield Elementary School***

Bakerfield Elementary School was opened in 1961, and is located at 36 Baker Street. The one-story school has undergone renovations in 1961, 1962, 1989, and 1999 and additions in 1962 (classroom/teacher support), 1989 (media center), and 1999 (classroom/teacher support) and now has an area of 65,691 square feet on 10 acres of land, 8 acres of which are considered outdoor play/activity area. The school serves Grades PK- 5. Bakerfield Elementary is also a community school that sees student's education as a shared responsibility between the school, the family, and the community. Facility features include a gym, one multipurpose court, two outdoor basketball courts, one indoor basketball court, two 60'-75' diamonds, one full-size athletic field (220'x360'), and two playgrounds.

### ***George D. Lisby Elementary School at Hillsdale***

George D. Lisby Elementary School at Hillsdale provides education for Grades PK-5 and is located at 810 Edmund Street. The school opened in 1968 and, with the addition of a media center in 1998, now has an area of 56,295 square feet on 20 acres of land, 15 acres of which is considered outdoor activity area. Facility features include a gym, one multipurpose court, two outdoor basketball courts, one indoor basketball court, one 60' diamond, one 60'-75' diamond, one full-size athletic field (220'x360'), and two playgrounds. The HCPS 2021 Educational Facilities Master Plan's Facility Needs Summary identified the need for a renovation and additional capital projects to replace aging infrastructure; a timeline has not been identified.

### ***Hall's Cross Roads Elementary School***

Hall's Cross Roads Elementary School opened in 1943 and is located at 203 E. Bel Air Avenue. It has had subsequent additions in 1955 (classroom), 1968 (kindergarten annex), and 1997 (elevator) and renovations in 1955, 1968, 1993, and 1996 and now has an area of 63,082 square feet on 12.7 acres of land, of which 9 acres are considered outdoor activity area. Facility features include a gym, one multipurpose court, two outdoor basketball courts, one indoor basketball court, one 60'-75' diamond, one full-size athletic field (220'x360'), and two playgrounds.

### Projected School Enrollment

In accordance with the Harford County Adequate Public Facilities (APF) provisions of the Harford County Code (§267-126), testing for adequate school capacities occurs on June 1 and December 1 of each year. The school system updates their enrollment figures and projections after the Maryland State Department of Education certifies the official September 30, 2020, enrollment (see **Table 3-1, School Capacity Utilization and Project Enrollment**). The adopted adequacy standard for HCPS is for projected enrollment not to exceed 110% of the rated capacity within three years for both elementary and secondary schools. Preliminary plans for new subdivisions of greater than five lots or site plans for multi-family residential development exceeding five units cannot be approved where the standard is exceeded. None of the Aberdeen feeder schools exceed the 110% rated capacity in the next three years or in projections through 2028.

**Table 3-1. School Capacity Utilization and Project Enrollment**

School	State Rated Capacity	Actual Enrollment		Projected Enrollment				
		2022-2023	2024	2025	2026	2027	2028	2029
<b>Elementary Schools</b>								
Bakerfield Elementary	500	463	468	471	473	476	478	480
G. Lisby Elementary at Hillsdale	473	503	508	510	512	514	515	516
Hall’s Cross Roads Elementary	552	454	457	456	460	451	455	454
Roye-Williams Elementary	703	443	442	448	442	451	447	446
<b>Middle Schools</b>								
Aberdeen Middle	1,624	1,086	1,100	1,106	1,112	1,118	1,124	1,130
<b>High Schools</b>								
Aberdeen High	1,720	1,499	1,539	1,529	1,523	1,535	1,543	1,545

Source: Harford County Public Schools & Department of Planning & Zoning, Amendment to 2020 Annual Growth Report (September 2022).



## PARKS & RECREATION

The City’s numerous park and recreation facilities provide programs and space for residents, workers, and visitors to explore, relax, and play. These facilities take many forms and serve various areas of the City. The City will continue to maintain as well as identify opportunities and needs to update facilities when needed. **Table 3-2, Park & Recreation Facilities** list the existing park and recreational facilities with the City. The City is also within close proximity to Susquehanna State Park, Shucks Regional Park, Flying Point Park, and Cedar lane Regional Park for residents to enjoy. **Map 3-2, Park & Recreation Areas** shows the location of the City facilities.

**Table 3-2. Park & Recreation Facilities**

Name	Location	Acreage	Designation
<b>A.B. DeMarco Memorial Park</b>	971 Middleton Road	3.8	Community
<b>Aberdeen Family Swim Center</b>	615 Old Robinhood Road	11.4	Community
<b>Church Green Park</b>	75 E. Bel Air Avenue	0.5	Community
<b>Festival Park</b>	60 N. Parke Street	1.07	Community
<b>North Deen Park</b>	Center Deen Avenue off Old Post Road	11.0	Community
<b>Plater Street Park</b>	687 Plater Street	0.9	Neighborhood
<b>Rock Glenn Park</b>	200 Rock Glenn Blvd	21.4	Community
<b>Twin Oaks</b>	Courtney Drive	0.7	Neighborhood
<b>Veterans Memorial Park</b>	N. Parke Street/Rogers Street	0.5	Community
<b>Victory Street Park</b>	Victory Street	6.20	Community

Source: City of Aberdeen

### Park & Recreation Facilities

#### **A.B. DeMarco Memorial Park**

A.B. DeMarco Memorial Park is located off Ruby Drive and MD 22 near Beards Hill Shopping Plaza. This facility is a 3.8-acre community park featuring open spaces for a variety of active and passive recreational activities. A parking lot and vehicular access to the site is gained off Middleton Road. Sidewalks along Middleton Road provide pedestrian access to the park. The park is actively used by the North Bay Rugby Association.

#### **Church Green Park**

In 2018, Aberdeen built a new park at Church Green Square, which was one of the first teen- and adult-oriented parks in northeastern Maryland. The park is located on 0.5 acres at the Intersection of New County Road and Osborne Road and features adult exercise equipment and a playground.



## Chapter 3 – Community Facilities

### ***Festival Park***

Located in the heart of Aberdeen's downtown across from City Hall, and with nearby on-street parking, Festival Park is home to many community events including the annual Earth Day Celebration, Christmas Tree Lighting, Police Community events, Farmers' Markets, 5-k racing events, and other celebrations held year-round.



Equipped with a playground, restrooms, a pavilion, music system, picnic and chess tables, Festival Park is used frequently as a location for lunch with friends, weekend playground trip, or a quick game of catch. It is also available to rent for private occasions year-round. Other features include a statue of an Eagle in flight, art works, 911 Memorial, and the Aberdeen Proving Ground (APG) Workers Memorial.

### ***North Deen Park***

North Deen Park is an 11-acre community park featuring active and passive leisure opportunities in a residentially developed area. Primary access to the park is from Old Post Road and the North Deen residential community. North Deen Park is improved with a baseball/softball field, a football/soccer/lacrosse field, seating, playground, and a large parking lot. It also features an inline hockey skating rink and a skateboard park, which are free to use year-round. The primary attraction at this park is the skateboarding facility. The skate park offers two half pipes joined by spines, platforms, three sided hips, a large pyramid with rails, a raised box with bench and grind rail, and two quarter pipes with grind rails and platforms.



On June 29, 2022, the City hosted a community meeting to obtain feedback from the community on the state-of-the-art skate park being planned for the site with the American Ramp Company. The new state-of-the-art skate park will be completed in the spring/summer of 2023.



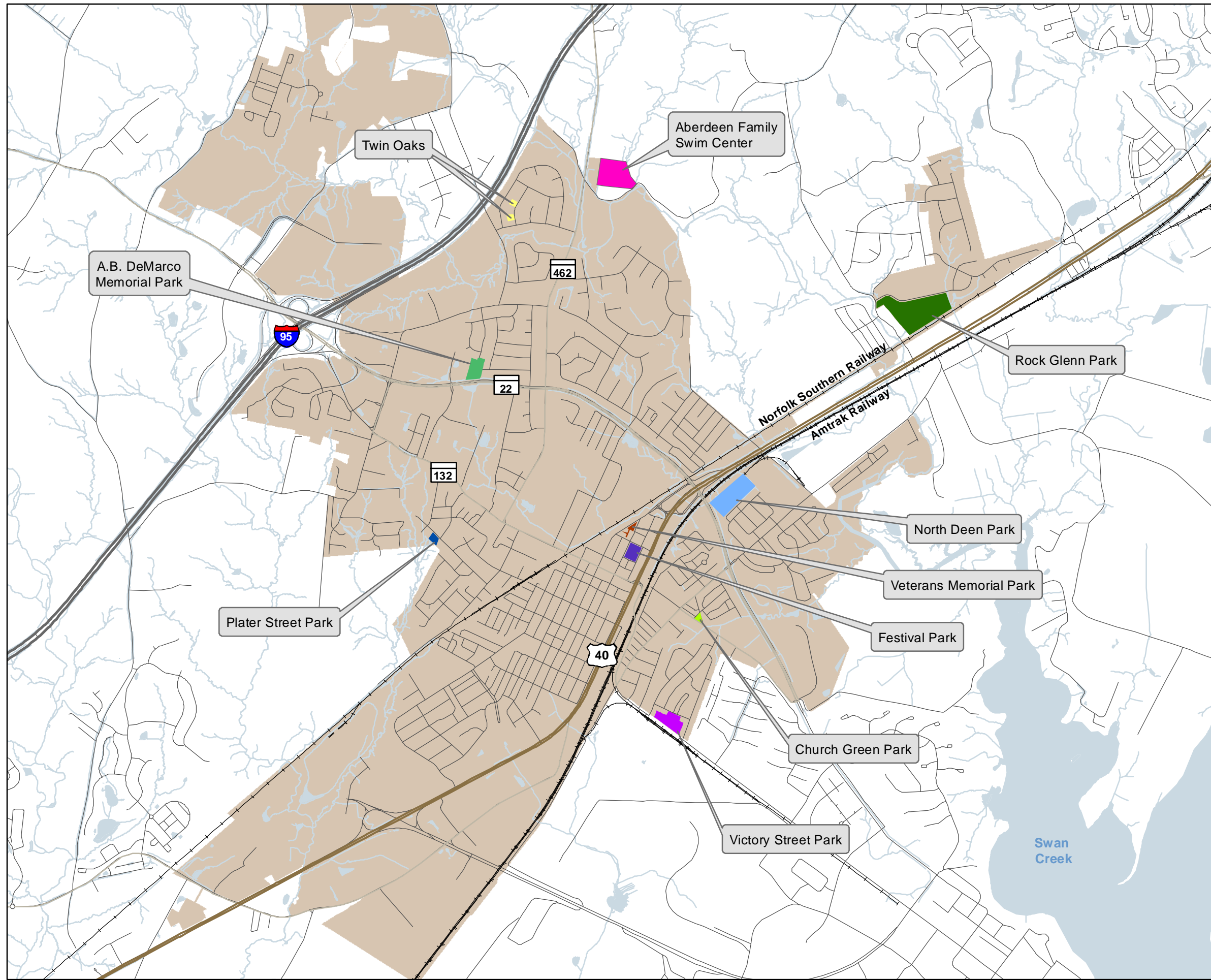
### ***Plater Street Park***

Plater Street Park is located off Plater Street near Moyer Drive. This site features a neighborhood park under 1 acre in size, with improvements including a pavilion, picnic area with grills, and playground equipment.

# MAP 3-2

## Park & Recreation Areas

- City of Aberdeen
- Water Bodies
- Railroad
- Major Roads**
  - Interstates
  - US Highways
  - State Routes
  - Local Routes
- Parks & Recreation**
  - A.B. DeMarco Memorial Park
  - Aberdeen Family Swim Center
  - Festival Park
  - North Deen Park
  - Plater Street Park
  - Victory Street Park
  - Twin Oaks
  - Rock Glenn Park
  - Veterans Memorial Park
  - Church Green Park



Source: City of Aberdeen  
Wallace Montgomery created this map for planning purposes from a variety of sources. It is neither a survey nor a legal document. Information provided by other agencies should be verified with them where appropriate.

April 2023  
0 0.1250.25 0.5 Miles



### **Rock Glenn Park**

In 2018, the City began planning efforts with Harford County Department of Parks and Recreation to build a new multi-use recreation field in the Rock Glenn area to be completed in 2023. Harford County Department of Parks and Recreation funded \$1.0M towards the park improvements. Located off Old Robinhood Road and Rock Glenn Boulevard, the park will be a 22-acre facility complete with multi-purpose fields and courts, walking trails, a playground, and a parking lot. For FY 2022, Maryland Department of Natural Resources (MDDNR) awarded the City with a \$400K grant to fund Aberdeen’s share of improvements, which include two multi-purpose fields, a multi-purpose double-sized court for basketball and pickleball, a walking trail, playground, and a parking lot.

### **Twin Oaks**

Twin Oaks was purchased for neighborhood open space in the Maxa Woods subdivision located off Courtney Drive and Cronin Drive. The open space area consists of two residential lots, one of which features an historic Swamp White Oak tree that is estimated to be over 100 years old, the Maryland Big Tree Program Harford County Champion of 2019. Both lots are landscaped and can be used as picnic areas for the residential community.

### **Veterans Memorial Park**

Veterans Memorial Park is located immediately north of the intersection of North Rogers Street and North Parke Street, landscaped with azaleas and mature shade trees. The half-acre park is traditionally the location for Veterans Day activities.



### **Victory Street Park**

Located off APG Road and Victory Street. The park occupies 6.2 acres of land and features mature trees for shade. Facilities include a large playground that features dinosaurs, a basketball court, picnic tables, pavilion, and 6 hole disc golf course. Victory Street Park suffered a devastating fire in 2016 with damages estimated at \$100K. The City invested in the park’s complete reconstruction, which included the addition of a 6-hole disc golf course and a multi-feature dog park. In October 2018, Aberdeen leaders and community members joined in the official ribbon cutting ceremony for the Aberdeen Dog Park, one of northeast Maryland’s largest “bark parks.” The Dog Park features a split park for small and large dogs, ramps, exercise tunnels, a community dog toy bin, benches, and plenty of shade.



### OPEN SPACE

Maintaining and providing more opportunities for connecting to open space is important to the quality of life in Aberdeen. These areas include the public parks, recreational areas, and other open space areas throughout the City. As the City has grown, the amount of open space available for public use and protection is limited. It is important as part of the ongoing development and redevelopment opportunities, that consideration should continue to be given to provide additional open space areas for public use.

Open space is required not only for providing or planning for park and recreational areas, but also for the protection of environmental features and resources. There are approximately 168 acres of recorded open space within the City limits that include parks, recreational facilities, stormwater management facilities, non-tidal wetlands, floodplains, forest conservation easements, and required open space.

When reasonable and feasible, the City should continue to identify land that can be designated as open space to be acquired or preserved. This includes coordination with property owners and developers through the planning review process to ensure consideration is given when applicable. These efforts also include the continued coordination with Harford County to protect and preserve open space areas around the City and in particular the designated Planning Areas included in **Chapter 5 – Municipal Growth**.

Additional discussion of open space areas, particularly those with environmental constraints or sensitive areas, is found in **Chapter 9—Environmental Resources and Sensitive Areas**. Information as it relates to water resources and stormwater management related to the importance of open space can be found in **Chapter 10—Water Resources**.

### HEALTH SERVICES

There are many medical, dental, physical therapy, and mental health practitioners' offices in or near Aberdeen to provide health services and needs to the community. Two dedicated urgent care facilities serving the Aberdeen community including University of Maryland Urgent Care (744 S. Philadelphia Blvd., Suite B), and Patient First (995 Hospitality Way).

In November 2021, University of Maryland Upper Chesapeake Health (UM UCH) opened Phase 1 of its 60-acre multi-phase \$120 million medical campus in Aberdeen, Maryland. The first phase included redevelopment of a preexisting building which now functions as the Health and Wellness Center and the construction of a new Medical Center building.



The Health and Wellness Center presently serves patients and families seeking care in the following areas:

- Primary Care
- Cardiology
- Endocrinology & Diabetes Care
- Hematology & Oncology
- Chemotherapy Infusion
- Orthopedics
- Rehabilitation & Sports Medicine
- Wound Care

By winter 2023, additional programs will include:

- Radiology Imaging & Diagnostics
- Cardiac Nuclear Imaging
- Outpatient Behavioral Therapy
- Laboratory Services

Late winter of 2023 to early 1<sup>st</sup> quarter of 2024 will herald the opening of the Medical Center on the Aberdeen campus, which will include a new, state-of-the-art, 24-bay Emergency Department with specialized capabilities in the areas of geriatrics, behavioral health, and chemicals and toxicology. In addition, the Medical Center will house an advanced 33 bed inpatient Behavioral Health Pavilion, with expansion capabilities to 40 beds. Lastly, short stay medical observation beds serve short-stay patients that typically require less than 48 hours of care. This initial observation unit will have 17 beds with the potential to expand to 24.

To support the campus a state-of-the-art Heliport will provide access to the multi-faceted specialties within the University of Maryland Health System such as the world-renowned R Adams Cowley *Shock Trauma* Center in Downtown Baltimore.

The campus also boasts designated meeting rooms, designed to host a variety of community health, civic and non-profit organization-based meetings, events and discussion forums.