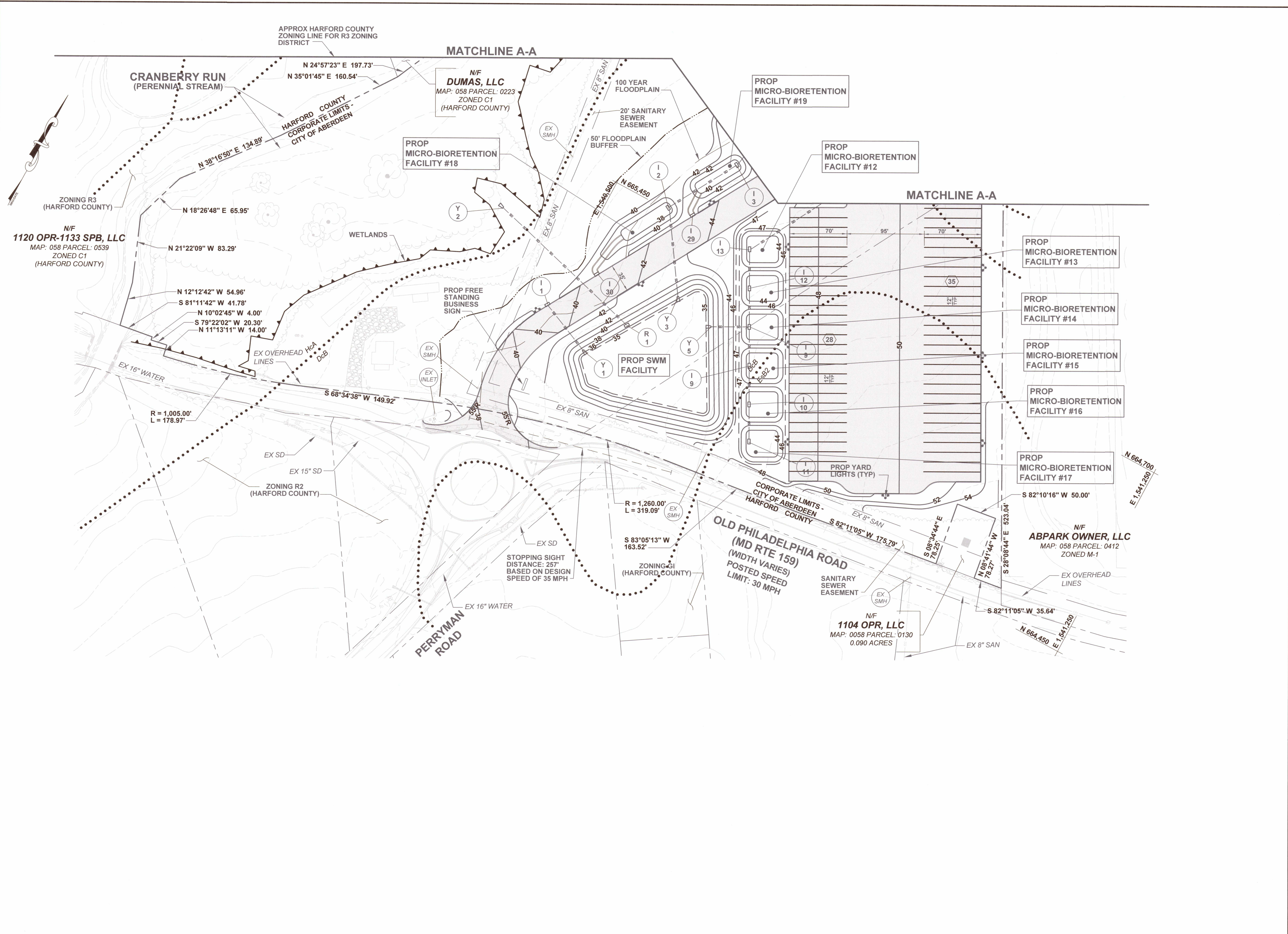


P:\C\927-1 RUTTERS STORE SITE PLANS\PLANS\CONSET SITE PLAN\PRELIMINARY PLAN-02.DWG



DRAWN BY: KPP SCALE: 1" = 50'
 DESIGN BY: KPP DATE: 9/10/21
 CHECK BY: XXX SHEET: 2 OF 2
 GRAPHIC SCALE: 0 25 50 100
 COMMISSION: C2927-1
 FILE NAME: Preliminary Plan-02.dwg
 © 2021 LANDMARK SCIENCE & ENGINEERING

THIS DRAWING AND THE DESIGN SHOWN ARE THE EXCLUSIVE PROPERTY OF LANDMARK SCIENCE & ENGINEERING AND SHALL NOT BE REPRODUCED, COPIED, EITHER WHOLLY OR IN PART, OR TRANSMITTED IN ANY FORM OR BY ANY MEANS, WITHOUT THE WRITTEN PERMISSION OF LANDMARK SCIENCE & ENGINEERING. THIS DRAWING DOES NOT INCLUDE NECESSARY CONSTRUCTION SAFETY. ALL CONSTRUCTION MUST BE IN ACCORDANCE WITH THE HEALTH, SAFETY AND OCCUPATIONAL SAFETY AND THE HEALTH ACT OF 1970 AND THE REGULATIONS THEREUNDER.

CELEBRATING 30 YEARS
Landmark
 Science & Engineering

200 CONTINENTAL DRIVE
 SUITE 400
 NEWARK, DE 19713
 PHONE: (302) 323-8461
 FAX: (302) 323-8461
 WWW.LANDMARK-SE.COM
 INFO@LANDMARK-SE.COM

210 RESEARCH BLVD
 SUITE 140
 PINEHURST, VA 22654
 PHONE: (410) 899-1244
 FAX: (410) 899-1284
 INFO@LANDMARK-SE.COM

PRELIMINARY SITE PLAN
 FOR
RUTTER'S STORE #103
 CITY OF ABERDEEN - HARFORD COUNTY - MARYLAND
 DEVELOPER: RUTTER'S STORES
 2295 SUSQUEHANNA TRAIL, SUITE C
 YORK, PA 17404
 OWNER: JIMMY W. RUTTER
 2295 SUSQUEHANNA TRAIL, SUITE C
 YORK, PA 17404
 (717) 815-2822

ENGINEER
 PROFESSIONAL CERTIFICATION: I HEREBY CERTIFY THAT THESE DOCUMENTS WERE PREPARED OR APPROVED BY ME, AND THAT I AM A DULY LICENSED PROFESSIONAL ENGINEER UNDER THE LAWS OF THE STATE OF MARYLAND. LICENSE NO.: 200450. EXPIRATION DATE: 10/14/2021.

STATE OF MARYLAND
 JOHN BRUCE GOZALLET
 PROFESSIONAL ENGINEER
 9/17/2021